

SiMeGa Design

Architecture + Interiors

We are a **multidisciplinary design practice** handling varied design projects ranging from **commercial & residential architecture** to **residential, retail, commercial & specialty interiors**.

It is driven as much by the endless potential of good design as it is by a social conscience, which is integral to our work philosophy.

From spatial experiences, we believe that good design can bridge the gap between existing and new. At SiMeGa Design, we promise to fill this gap with a strategic approach. We believe in **holistic thinking – architecture, interiors, furniture, graphics**.

We have thus far, created **concept-to-completion processes** for our clients across sectors.

About me: [Siddhi Mehta Gala](#)

Having earned a Bachelor of Architecture degree from [Kamla Raheja Institute for Architecture](#), Mumbai and [Masters degree in Advanced Architectural Design from Columbia University, New York](#), I am confident to be able to plan more precisely, anticipate issues and find elegant solutions. [Attention to detail](#) is critical.

I have worked with [Kliment Halsband Architects in New York](#) before returning to India. Joined [Ratan J Batliboi Consultants Pvt. Ltd](#) & collaborated with [IS NETWORK](#) to work on several space design projects.

A comprehensive approach allows to create diverse spaces that are utterly captivating.

SiMeGa Interiors

Our design approach is clean, modern lines with a concise color palette, yet don't shy away from creating layered, warm, rich, and inviting minimalist spaces

SEQUOIA CAPITAL
Lower Parel, Mumbai



Cafe



SEQUOIA CAPITAL
Lower Parel, Mumbai



Cafe



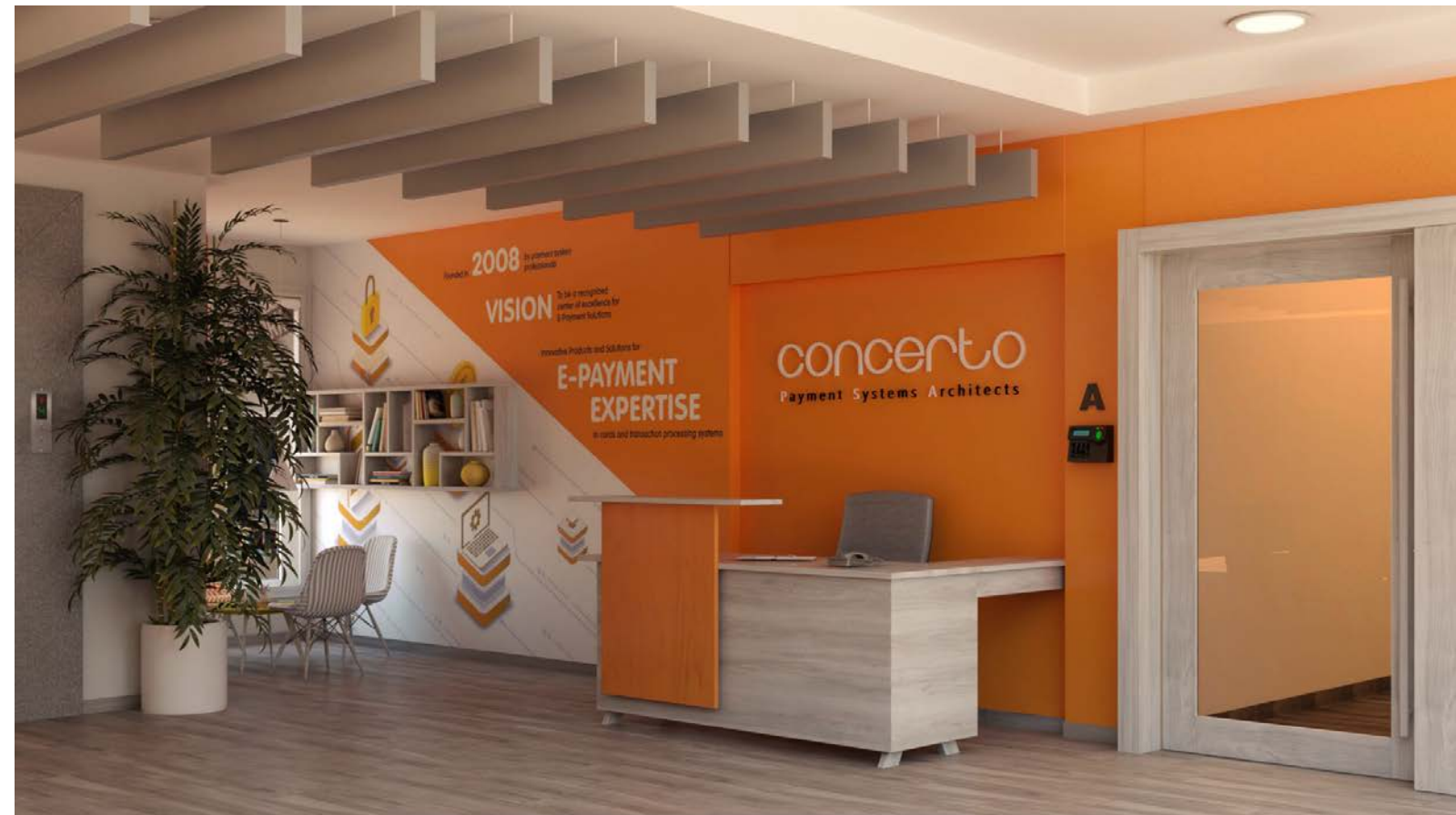
Breakout Room

RUNWAL HEIGHTS
Mumbai



CONCERTO SOFTWARES

Navi Mumbai

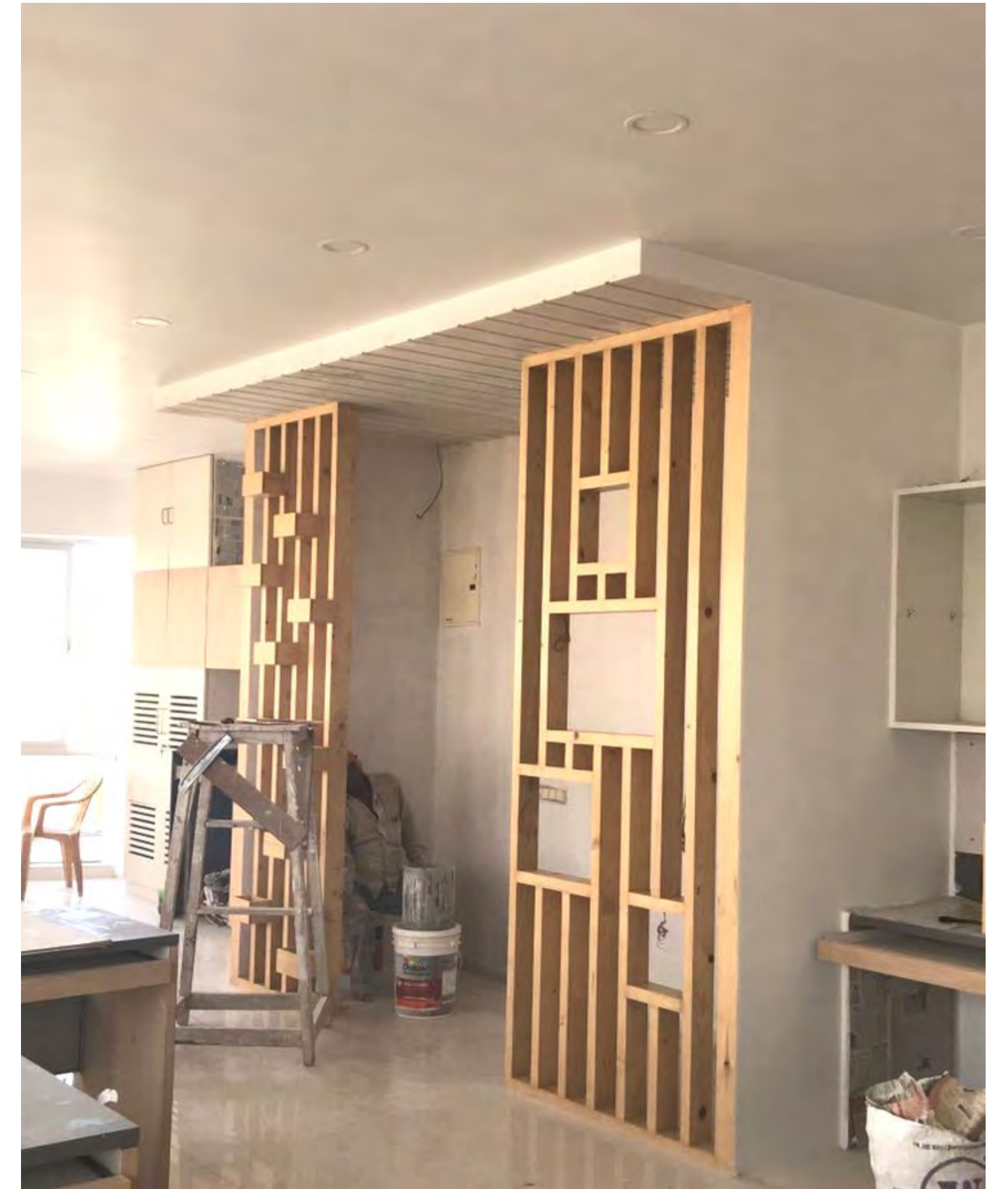


3D views

POSITIVE ART OFFICE (On going)
Surat



3D view



Site in progress

POSITIVE ART OFFICE
Surat



Directors Cabin – 3D view



Site in progress

iFast Financial Mumbai



SHOW FLAT FOR VIJAY GROUP Mumbai



SHOW FLAT FOR VIJAY GROUP Mumbai



SiMeGa Architecture

We have an **integrated approach to design** with utmost personal interest & involvement in all parts & phases of design & construction management. We ensure that the project develops within the potential given with **our attention to detail, proportions & scale, technical knowledge & artistic judgment.**

FRIENDS SEMINARY (Under construction)
New York

Design Development



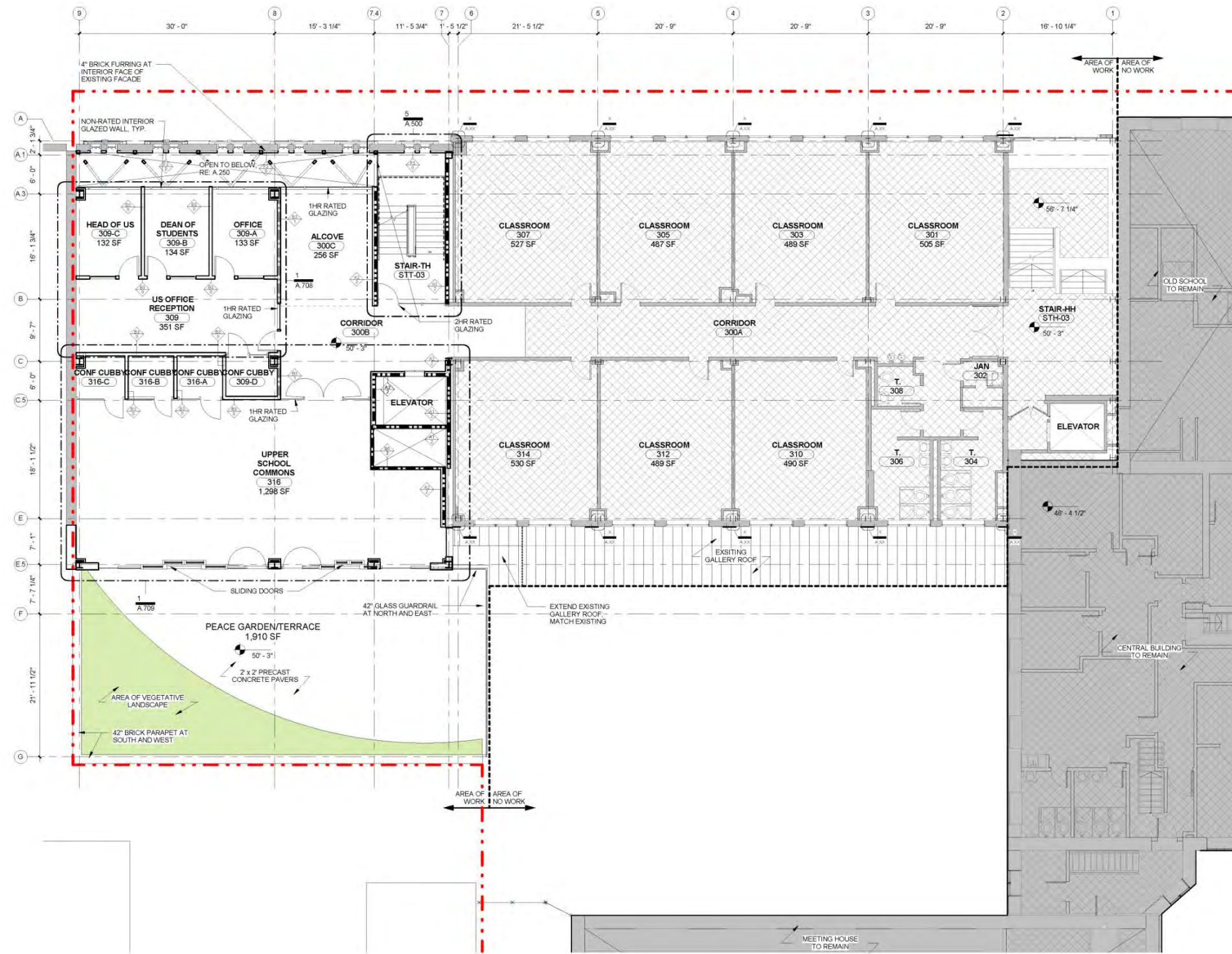
FRIENDS SEMINARY (Under construction)
New York



FRIENDS SEMINARY (Under construction)

New York

Working Drawings



PUBLIC SCHOOL-14 (Under Construction) New York

Design Development



VIEW FROM CROSBY AVENUE



VIEW FROM SOUTHEAST



VIEW FROM HOLLYWOOD AVENUE



VIEW FROM CROSBY AVENUE



VIEW FROM NORTHEAST

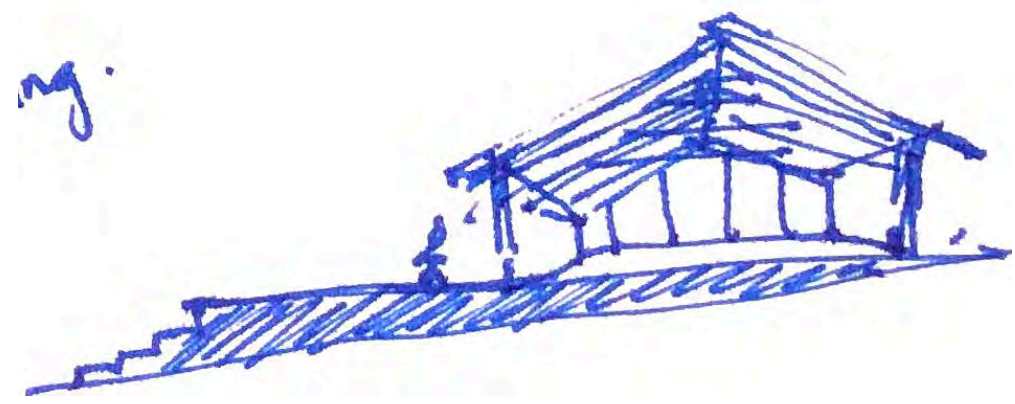
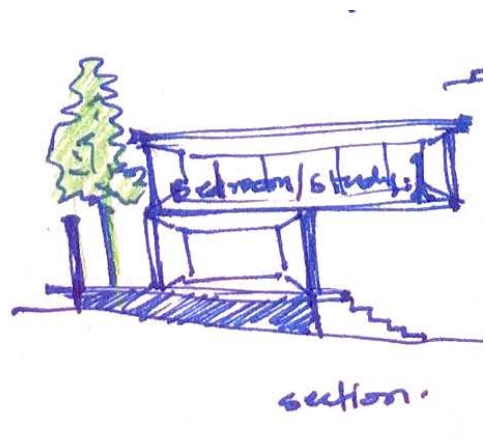
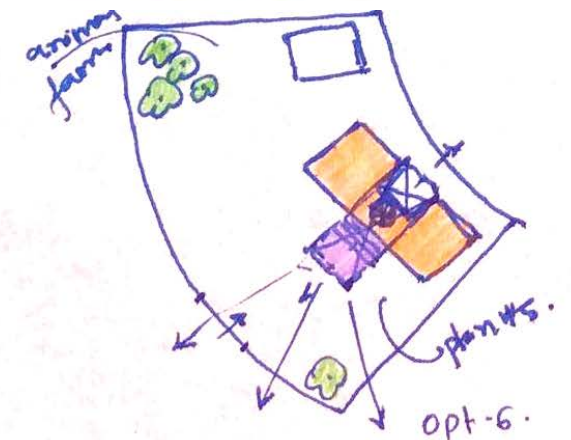
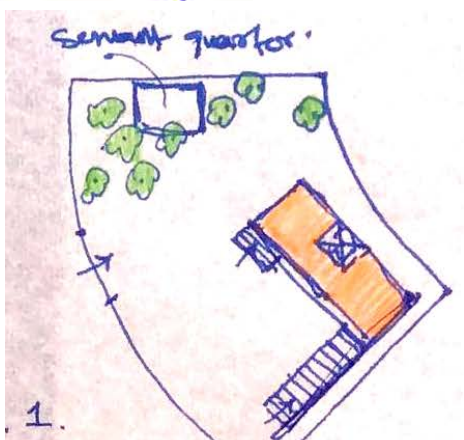
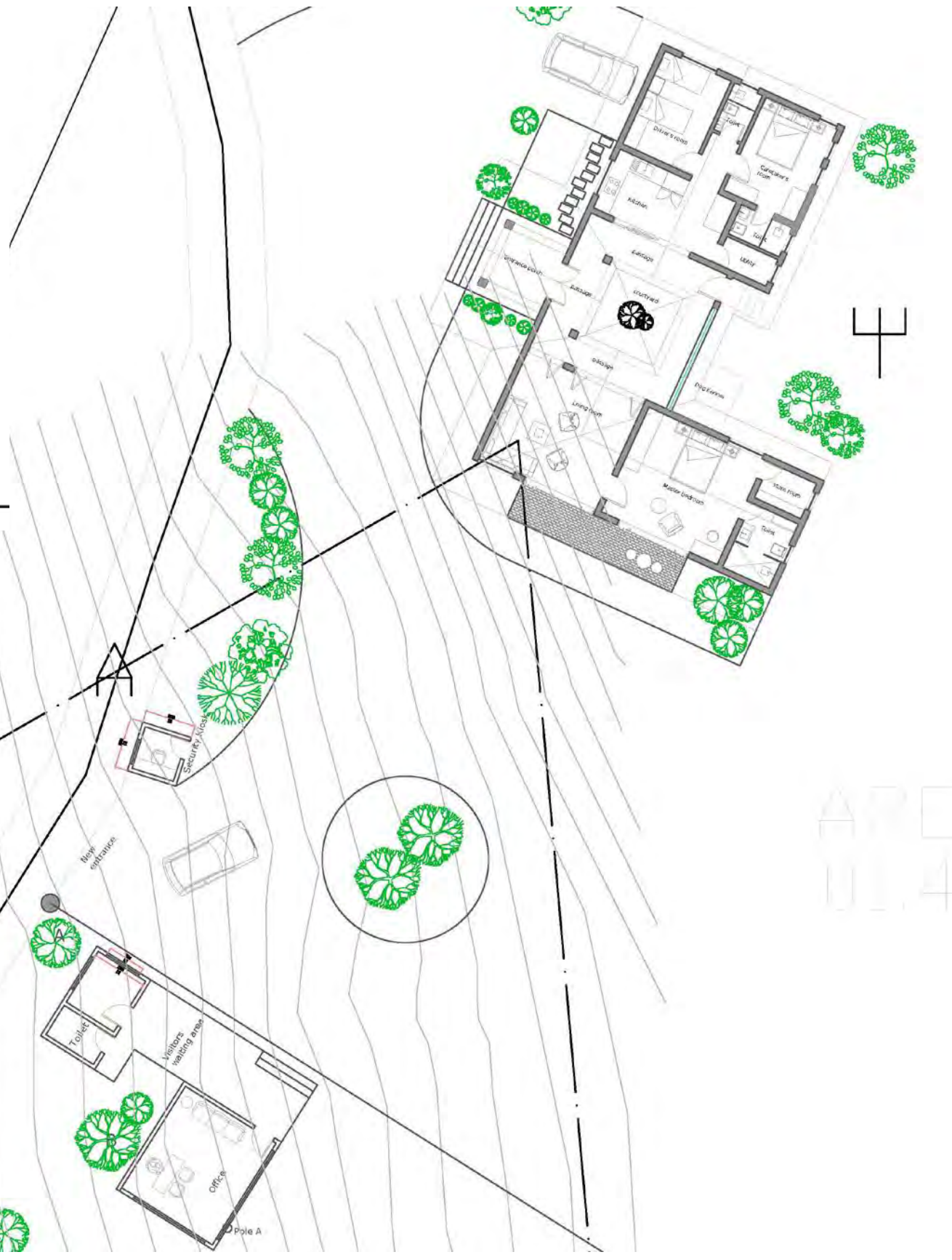
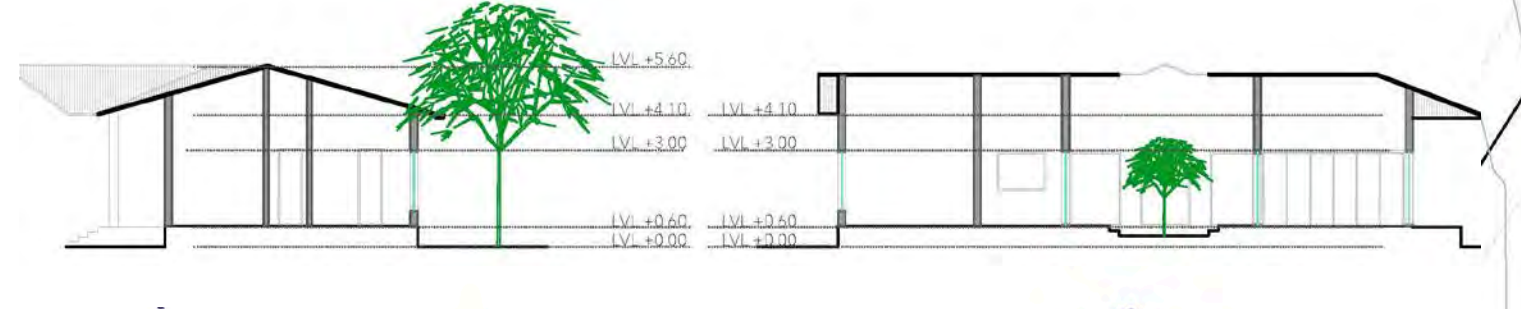
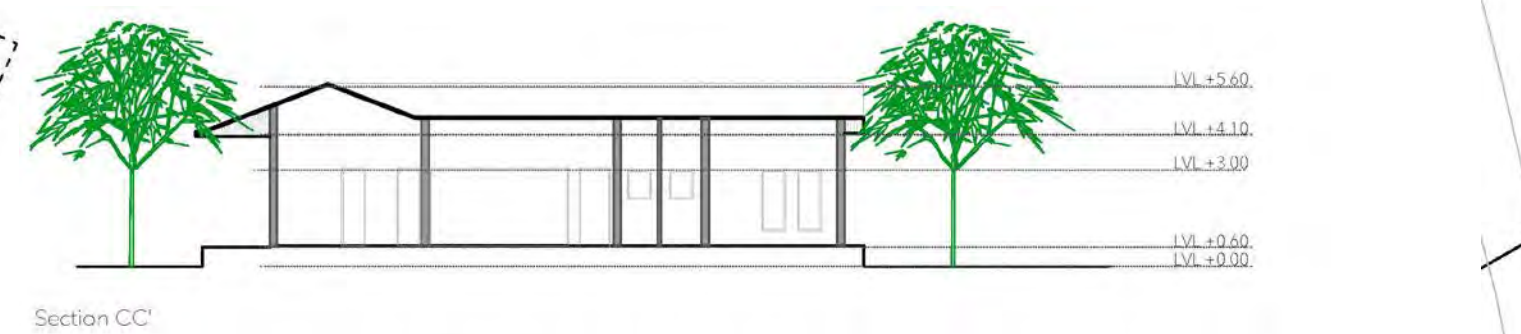
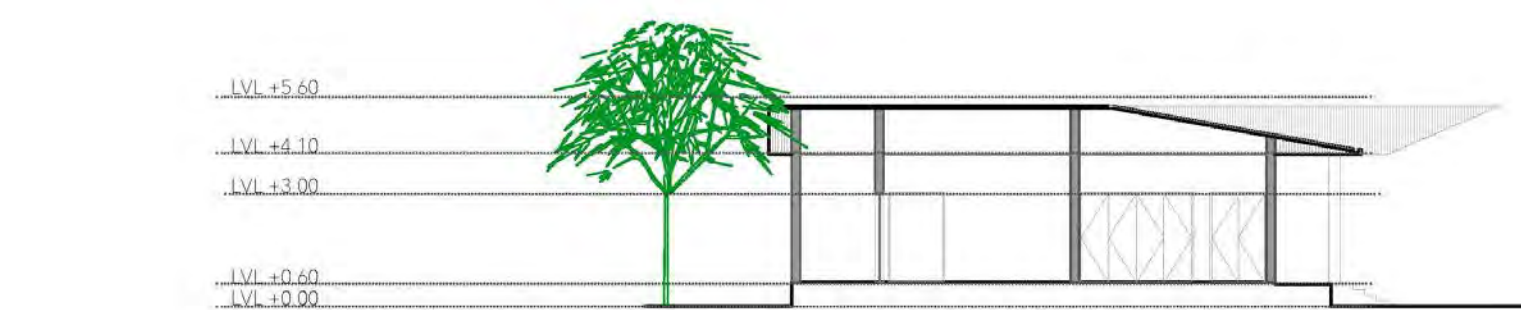
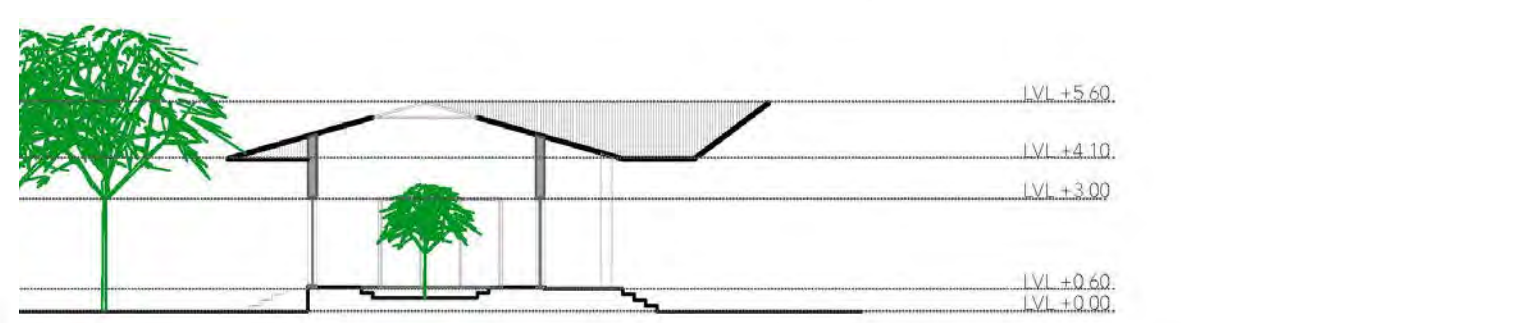
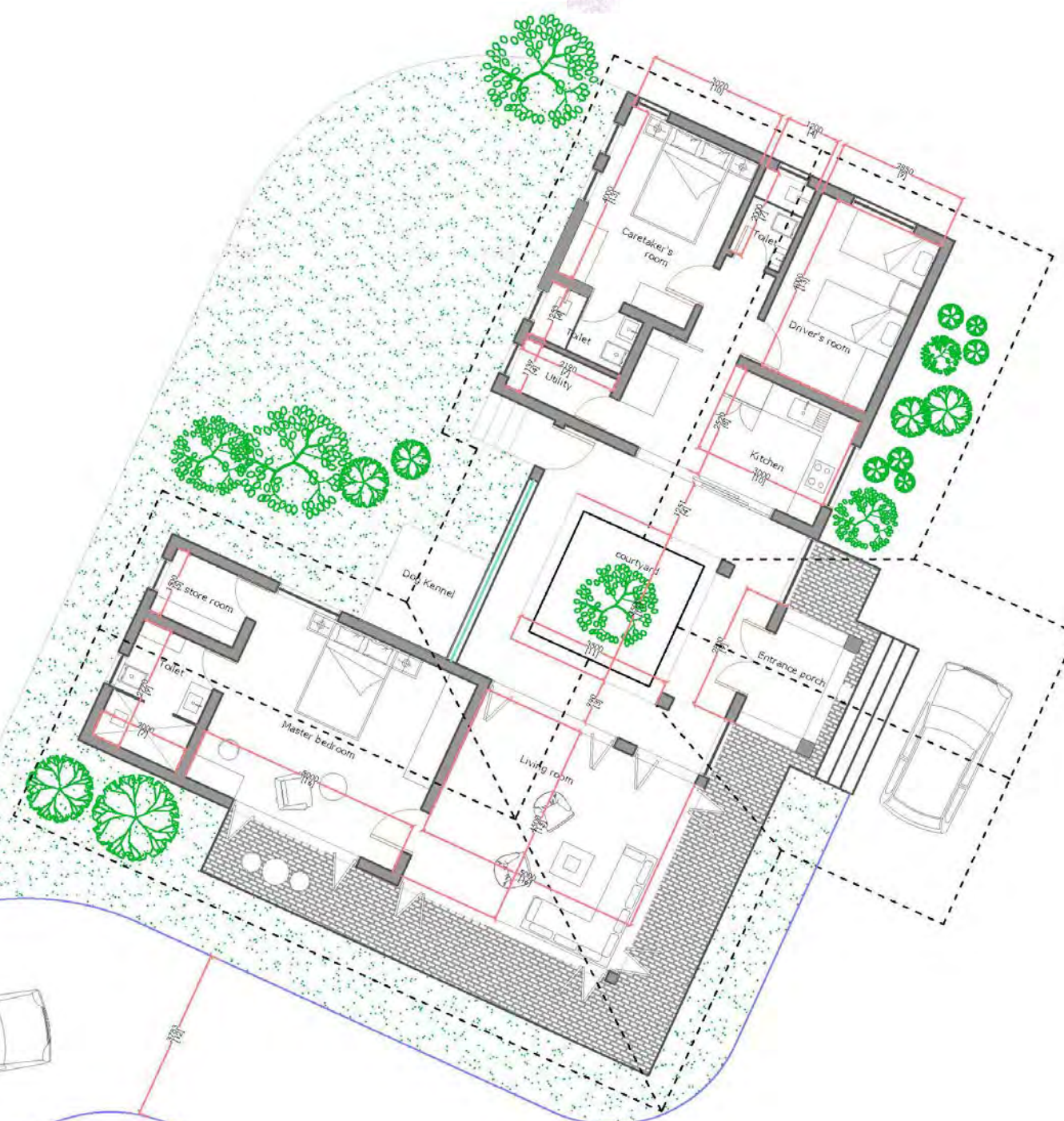
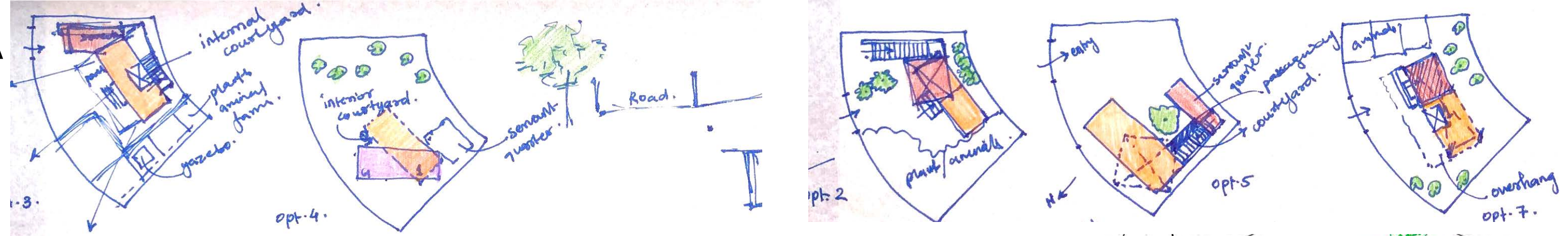


VIEW FROM HOLLYWOOD AVENUE



ONA VILLA FOR BAAYA Shahpur, Nashik

Design Development



SKILL DEVELOPMENT CENTRE (Under construction)

Tripura

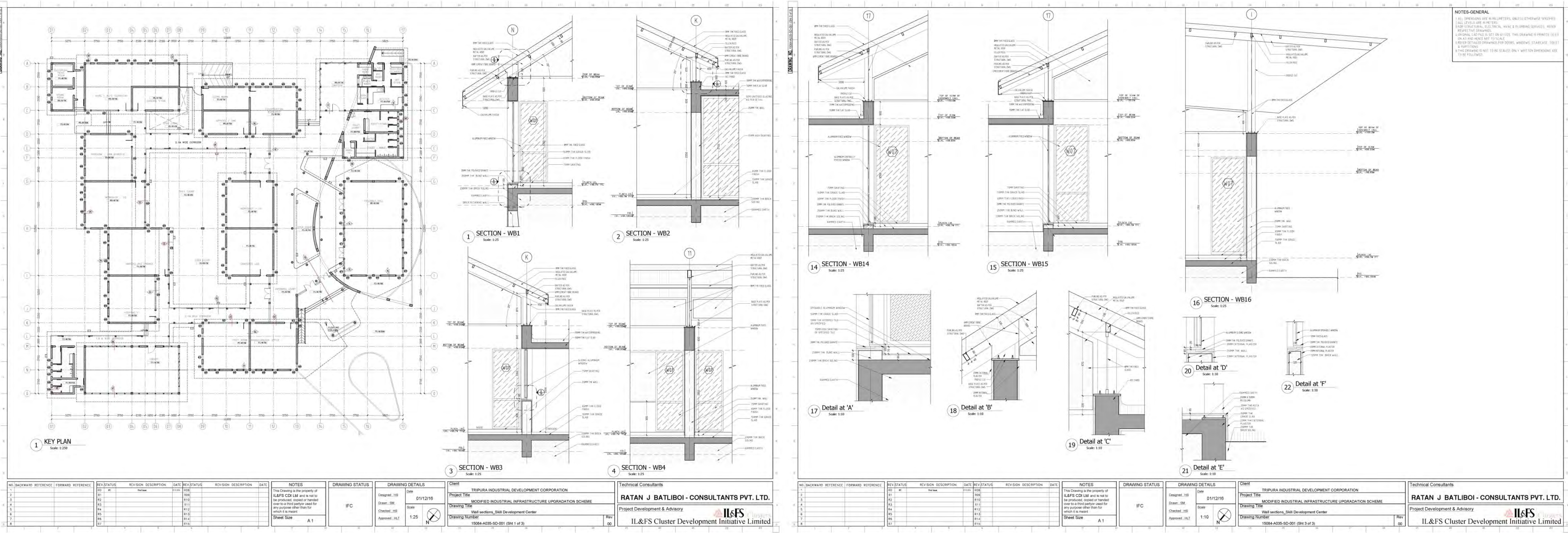
Design Development



SKILL DEVELOPMENT CENTRE (Under construction)

Tripura

Working Drawings



NOTES-GENERAL
 1. ALL DIMENSIONS ARE IN MILLIMETERS, UNLESS OTHERWISE SPECIFIED.
 2. ALL LEVELS ARE IN METERS.
 3. ALL STRUCTURAL, ELECTRICAL, HVAC & PLUMBING SERVICES, REFER TO RESPECTIVE DRAWINGS.
 4. SURFICIAL LAYERS TO BE SET ON 4:1 SLOPE. THIS DRAWING IS PRINTED (LEFT ON AS) AND HENCE NOT TO SCALE.
 5. REFER TO RELATED DRAWINGS FOR DOORS, WINDOWS, STAIRCASE, TOILET & BATHROOMS.
 6. IF THIS DRAWING IS NOT TO BE SEALED, ONLY WRITTEN DIMENSIONS ARE TO BE FOLLOWED.

NO.	BACKWARD REFERENCE	FORWARD REFERENCE	REV. STATUS	REVISION DESCRIPTION	DATE	REV. STATUS	REVISION DESCRIPTION	DATE
1								
2								
3								
4								
5								
6								
7								
8								

NOTES
 This Drawing is the property of IL&FS COI Ltd and is not to be produced, copied or handed over to a third party, used for any purpose other than for which it is meant.
 Sheet Size A1

DRAWING STATUS	DRAWING DETAILS
IFC	Designed_HLT Date 01/12/16 Drawn_SM Checked_HLT Approved_HLT

Client TRIPURA INDUSTRIAL DEVELOPMENT CORPORATION	Technical Consultants RATAN J BATLIBOI - CONSULTANTS PVT. LTD. Project Development & Advisory IL&FS Cluster Development Initiative Limited
---	--

Project Title MODIFIED INDUSTRIAL INFRASTRUCTURE UPGRADATION SCHEME	Drawing Title Wall sections_Skill Development Center
Drawing Number 15084-A035-S0-001 (Sht 1 of 3)	

NO.	BACKWARD REFERENCE	FORWARD REFERENCE	REV. STATUS	REVISION DESCRIPTION	DATE	REV. STATUS	REVISION DESCRIPTION	DATE
1								
2								
3								
4								
5								
6								
7								
8								

NOTES
 This Drawing is the property of IL&FS COI Ltd and is not to be produced, copied or handed over to a third party, used for any purpose other than for which it is meant.
 Sheet Size A1

DRAWING STATUS	DRAWING DETAILS
IFC	Designed_HLT Date 01/12/16 Drawn_SM Checked_HLT Approved_HLT

Client TRIPURA INDUSTRIAL DEVELOPMENT CORPORATION	Technical Consultants RATAN J BATLIBOI - CONSULTANTS PVT. LTD. Project Development & Advisory IL&FS Cluster Development Initiative Limited
---	--

Project Title MODIFIED INDUSTRIAL INFRASTRUCTURE UPGRADATION SCHEME	Drawing Title Wall sections_Skill Development Center
Drawing Number 15084-A035-S0-001 (Sht 3 of 3)	

SKILL DEVELOPMENT CENTRE
(Under construction)
Tripura

Site pics



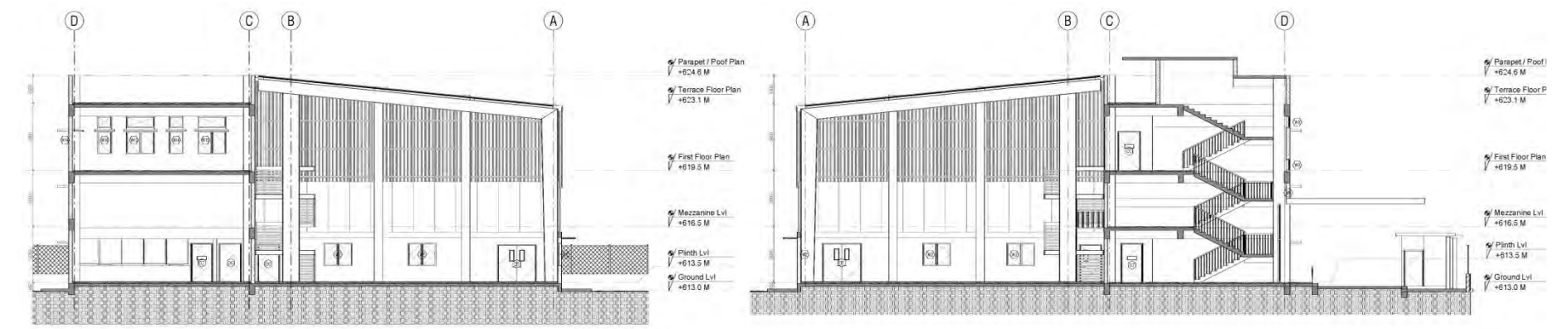
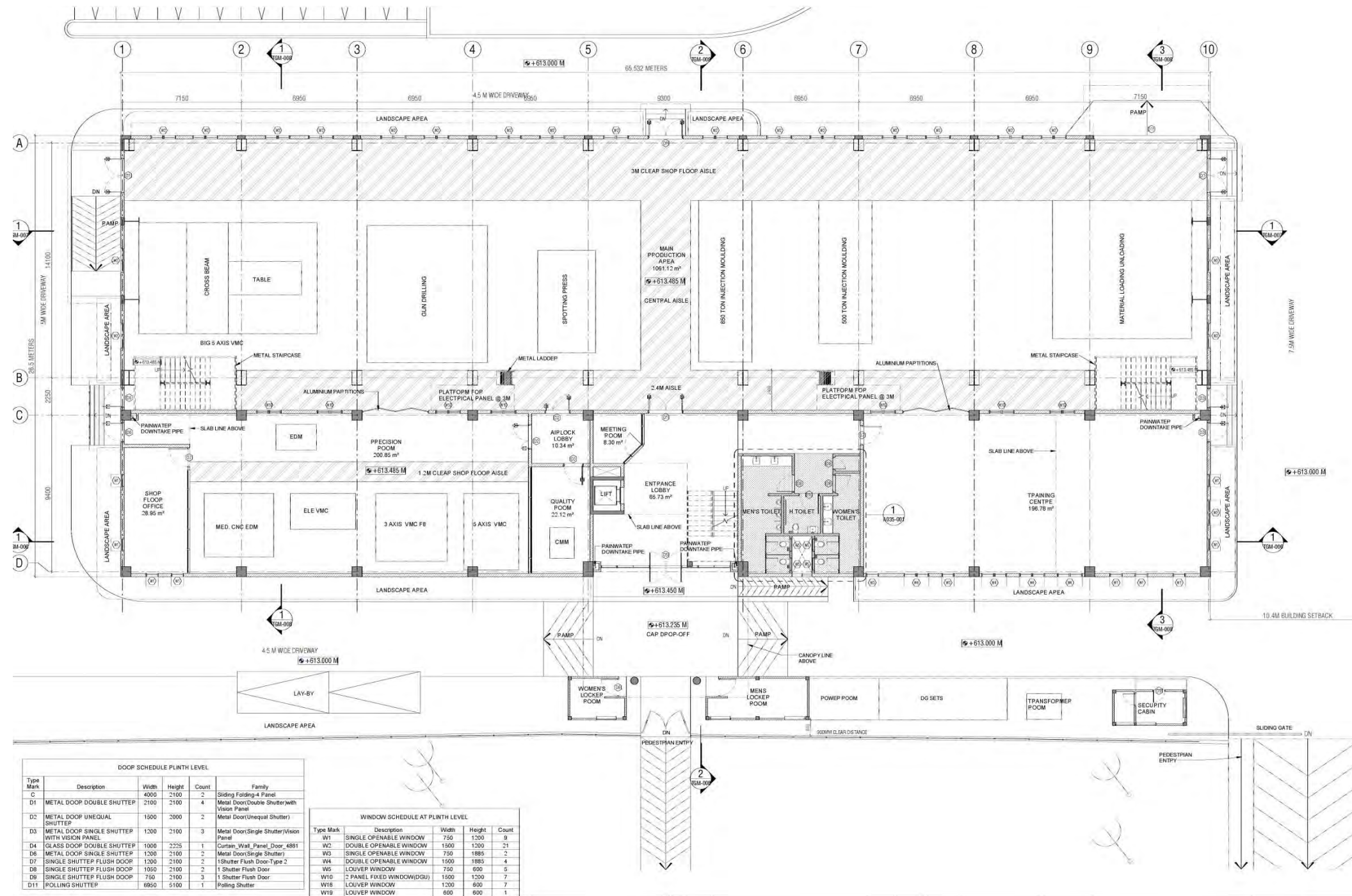
TAGMA (Tools and Gauge Machinery Association) Factory Pune

Design Development



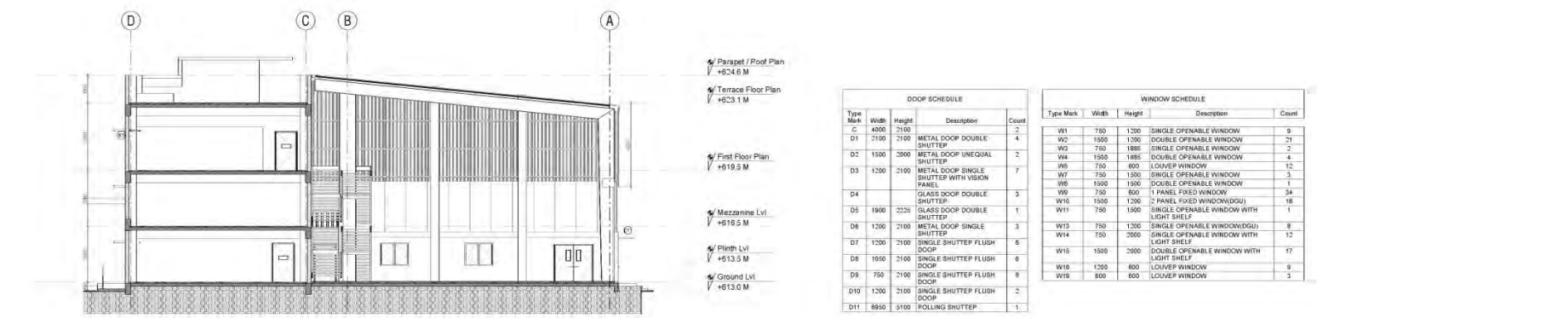
TAGMA (Tools and Gauge Machinery Association) Factory Pune

Working drawings

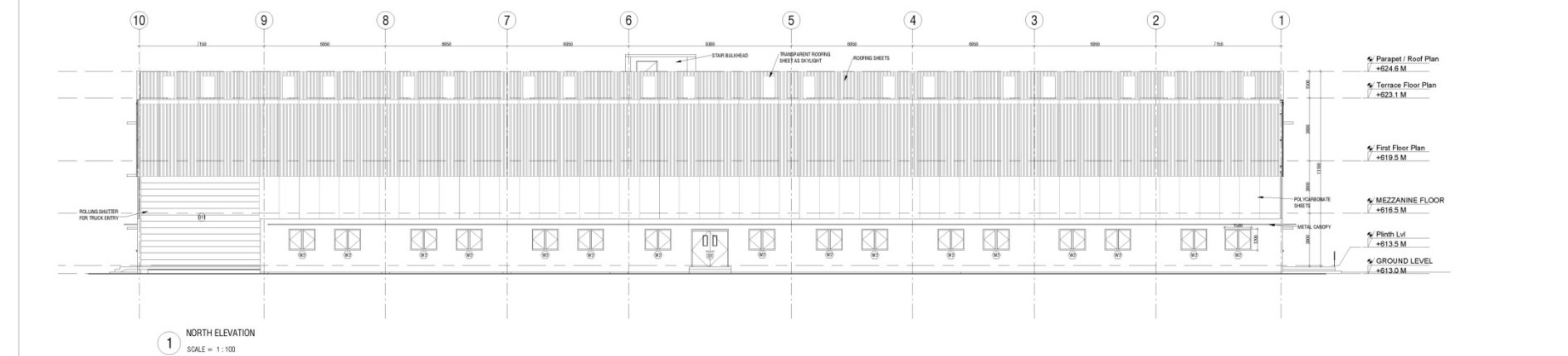


1 Section C-C'
SCALE = 1:100

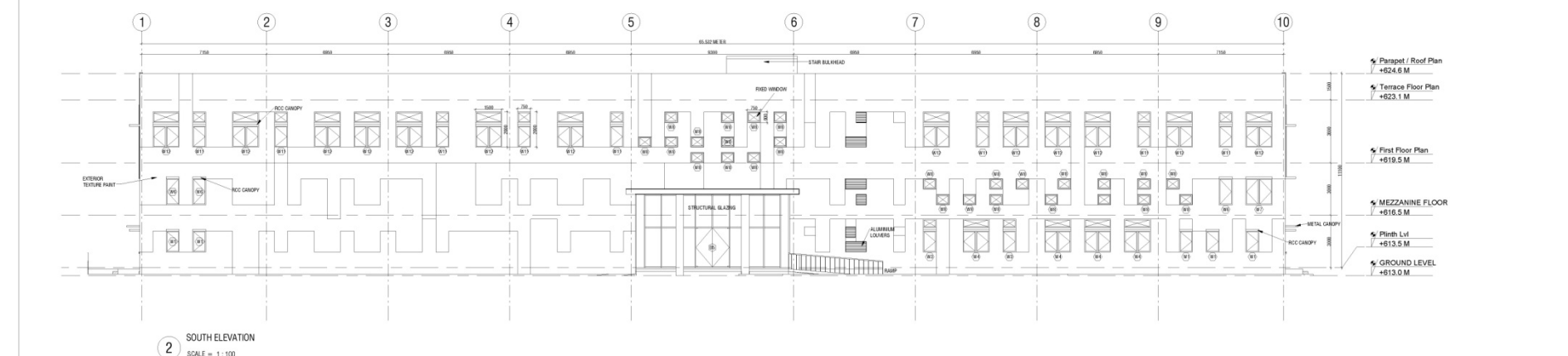
2 Section D-D'
SCALE = 1:100



3 Section E-E'
SCALE = 1:100



1 NORTH ELEVATION
SCALE = 1:100



2 SOUTH ELEVATION
SCALE = 1:100

VIJAY ESTATE (Phase 2, Under construction)

Vakas, Nerul

Layout & Elevation design



COLLABORATIVE SERVICES

Structural

Electrical

Heating, Ventilation & Air-conditioning

Plumbing

Landscape

Graphic Design

Visual communication Design

IS NETWORK[®]

B R A N D A N D S P A C E D E S I G N

SiMeGa Design

Architecture + Interiors

Tel: +91-98193-47711

Email: simegadesign@gmail.com

Declaration:

The contents of this presentation are to be viewed only by the client, singularly for the purpose of review and are exclusively the property of the architect and may not be shared with any external parties or copied in whole or parts, rewritten, nor any of the design contained within be adapted or used in present form without the consent of the architect.